

♄ SATURN in CANCER ♋

YOU HAVE SATURN IN CANCER IF YOU WERE BORN WITHIN THESE DATE SPANS:

6/20/1944	8/1/1973	4/18/1974	1/14/1976	6/3/2003
TO	TO	TO	TO	TO
8/2/1946	1/7/1974	9/16/1975	6/5/1976	7/16/2005



WHAT IS THE GREAT WORK OF YOUR LIFETIME?

Your life's great work is

PART TANGIBLE AND PART INTANGIBLE



Career

AUTHORITY FOR YOU IS:

- kind, strong enough to be gentle, nurturing but not weak.
- Find a mentor who IS this way, then BECOME this way.



Character

THESE THINGS MAY NEVER COME EASILY TO YOU:

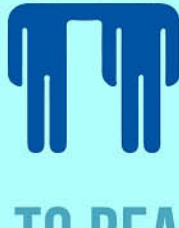
- * to really feel every feeling that moves through you (because you may lose control)
- * to love all your family members while seeing who they really are and disentangling yourself from their karma
- * to find the place on Earth where you truly belong (because bonding to a place can feel like a burden or a trap)
- * to build a family (because it seems like an enormous responsibility)

PURSUE THESE THINGS WITH DILIGENCE AND BECOME EXCELLENT AT THEM



APT CAREER AVENUES FOR YOU TO PURSUE

- emotions: therapist, social worker, counselor, coach
- the past: historian, archaeologist, antiques dealer
- things to do with families, genetics or heritage
- real estate, home-building, land and development



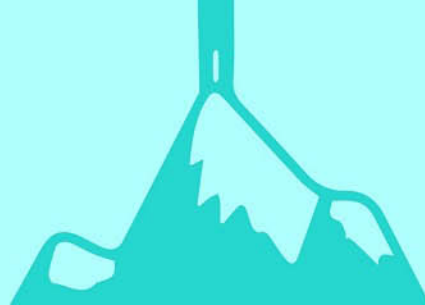
TO REALLY BUILD CHARACTER, DO THESE SCARY THINGS:

- feel everything that moves through your being. Eliminate emotional blocks.
- train your intuition until you can absolutely trust your gut.
- love what you do until you can do what you love. Steer toward a career that feels right and once you've found it, tolerate no laziness or whining in yourself.



SATURN IN CANCER BRINGS WITH IT A TEST OR REALITY CHECK:

Can you be emotionally real, practice meticulous self-care and put down roots in a place that's just right for you—can you be strong without armoring yourself against the ones you love?



FACE YOUR FEAR OF YOUR FAMILY'S LIMITATIONS AND TURN IT INTO A BALANCED LOVE OF YOURSELF AND THE FAMILY & CULTURE WHOSE GENES YOU CARRY